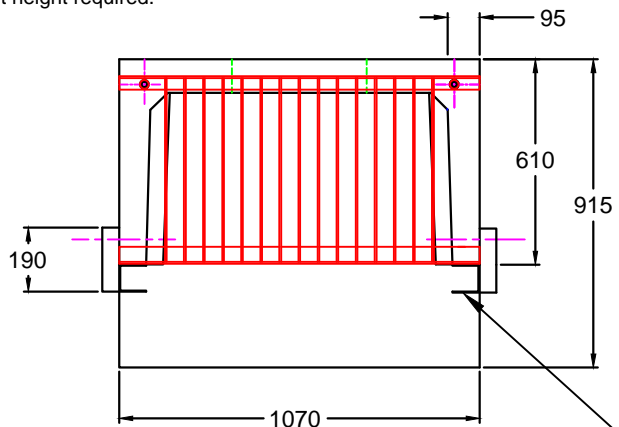
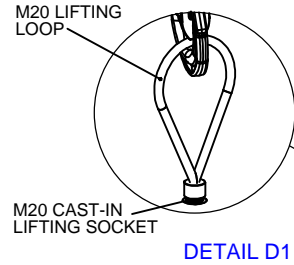
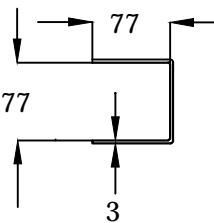


Opening in back wall cast to suit the outside diameter of the pipe at invert height required.

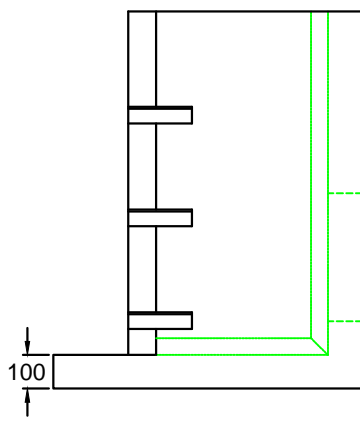
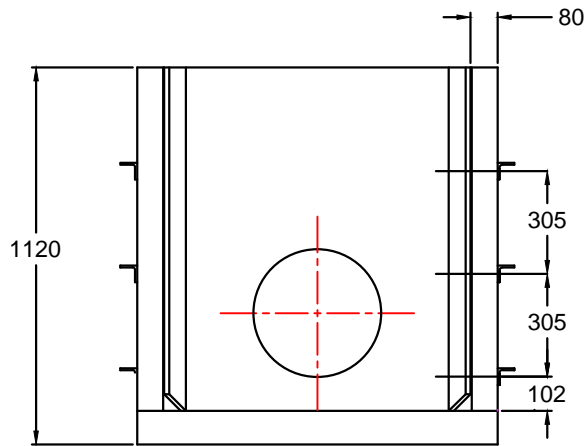
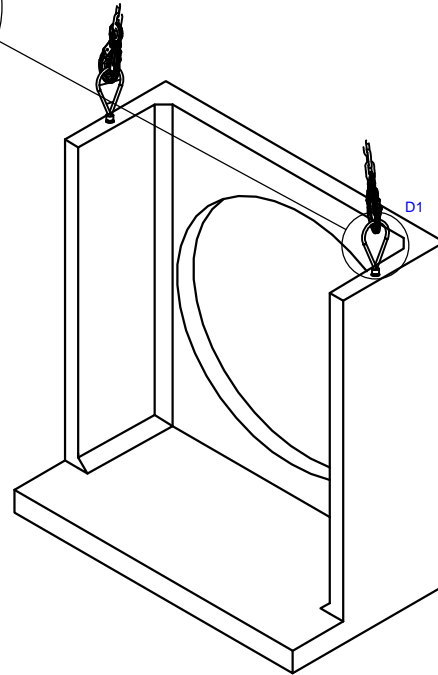


Grating manufactured from 30 x 5 flat at 55mm centres with 50 x 50 x 6 and 40 x 40 x 6 angle frame. Fully Welded and hot dip galvanised.

SCALE 3:1



Note: Isometric drawing is for reference only, details may not accurately represent actual design - please see detailed views for technical information



- NOTES:**
- All dimensions in mm U.O.S
 - All measurements ± 1 mm
- Specification Information**
- Opening in back wall cast to suit outside diameter of the pipework.
 - Invert level of pipe can be set to your specification.
- Headwall Installation**
- Units should be bedded on minimum 100mm thick well compacted Class 6A* selected well graded granular material.
 - *Manual of contract documents for Highway Works: Volume (MCHW1) specification for Highway Works, Series 600 (Nov.09).
 - Sit the headwall level or with a slight fall 1:50 from pipe to spill mouth.
- Handling**
- Weight of concrete is based on 2.4 tonne/m³+5% is recommended for sizing lifting equipment.
 - All lifting points shall be used as specified below.
 - Unit to be lifted as per lifting diagram.
- Concrete**
- Mix ref: Self-Compacting DC4/DS4 Mix
 - Lifting strength based on 2 cubes = 20N/mm²
 - Characteristic 28 day cube strength = 50N/mm²
 - Concrete provides Design Chemical Class 4 (DC4) to special Digest 1, Table F2.
- Reinforcement**
- Reinforcement to BS EN 13369.
 - Scheduling, dimensioning, bending & cutting to BS4449.
 - Cage to be machine tied with steel wire.
- Manufacture**
- Manufacture to BS EN 15256:2008 precast concrete products - Retaining wall elements, Factory Production Control Certificate number: 0086-CPR-650448 & BS EN 13369.
 - Tolerances to BS EN 13369 clause 4.3.1.1
- Finishing**
- | | Top | Sides | Rear | Rear of back wall |
|-------|-----|-------|------|-------------------|
| Class | A | A | A | Self-Levelled |
- Marking: Units shall be indelibly marked to show: Mould Reference code.
 - De-mould date.
 - Job reference number & unique product number.
 - Unit weight (kg)
- Design**
- Concrete design to EC2.
 - JKH have designed the concrete units only, the site conditions should be assessed for suitability by the scheme designer.
 - Units are designed to withstand a vertical live load surcharge of 10kN/M².
 - Weight of soil = 19kN/M².
 - Angle of internal friction = 30°.
 - Design Life: >100 years
- | Min Cover | Cover Block | Min Cover | Max Cover |
|-----------|-------------|-----------|-----------|
| All Faces | Size (mm) | Size (mm) | Size (mm) |
| | 33 | 25 | 35 |
- | Exposure | Exposure Index | Concrete Index | Free Chloride | Chloride |
|-----------|----------------|----------------|---------------|----------|
| All Faces | by Carbonation | by Chloride | attack | attack |
| | XS4 | XS2 | XC4 | XC4 |
- Fabrication Specification**
- Manufacture IAW EN 1090-2 EXC CLASS 1
 - Material grade is to be: BS EN 10025 S275
 - Welding carried out IAW EN 1090-2 PARA 7.5.4 - 7.5.18
 - All fillet and butt welds to have a minimum throat thickness of 6mm & joints to be fully welded where possible.
 - Ensure vertical flats are fully welded both sides where possible.
 - All sharp edges and burrs are to be removed.
 - Remove all weld splatter.
 - Holes by punching are permitted without reaming.
 - Galvanising is carried out after fabrication to BS EN: ISO 1461.
- Handrail Specification**
- Use Klamp Galvanised Size 9 Fittings.
 - Size 48.3mm OD 3.2mm Wall Thickness Galvanised Medium Duty Tube to BS EN 10255.
 - 360Nm Design Load as stated in BS 8118, BS 6180, BS 6396 & BS 7918. Civil Engineering Specification for the Water Industry (CESWI).
 - Other design loads available on request
 - GRP/FRP Handrails also available.



ADDRESS: JKH LIMITED
HAMPSTEAD AVENUE
MILDENHALL
IP28 7AS

TEL: 01638 713795
FAX: 01638 582507
EMAIL: info@jkh.co.uk
WEBSITE: www.jkh.co.uk

PROPRIETARY & CONFIDENTIAL

This information contained in this drawing is the sole property of JKH Design Sites Limited. Any reproduction in part or as a whole without the written permission of JKH Design Sites Limited is strictly prohibited.

DRAWING TITLE / PROJECT:
Water Control (WC) Headwall
1070mm wide x 1120mm tall
c/w single slides for stop logs

CLIENT:	Client
SCALE:	NTS
SCALE:	DRAWING DATE: 16/07/2019
HEADWALL WEIGHT:	DRAWING WEIGHT: 25kg
TOTAL WEIGHT:	725kg
DRAWN BY:	BM
CHECKED BY:	JP
DRAWING No:	



DO NOT SCALE DRAWING

WCF1070-1120S